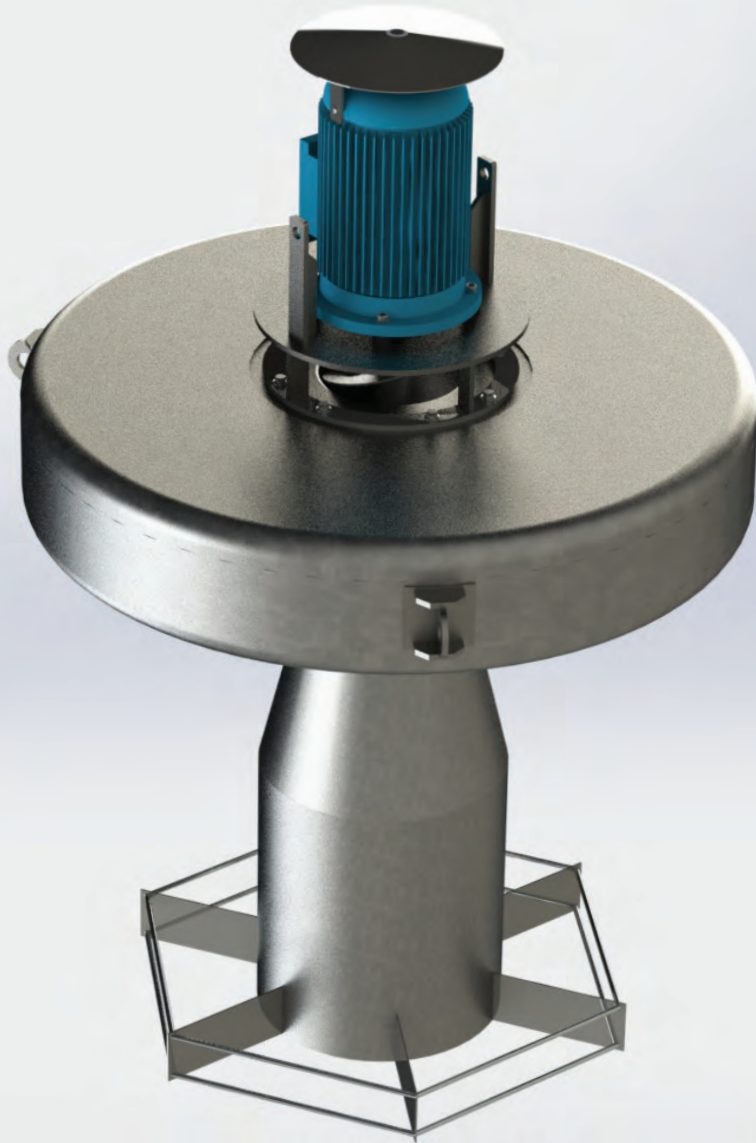




## SCREW TYPE FLOATING SURFACE AERATORS



[www.baharmuhendislik.com](http://www.baharmuhendislik.com)







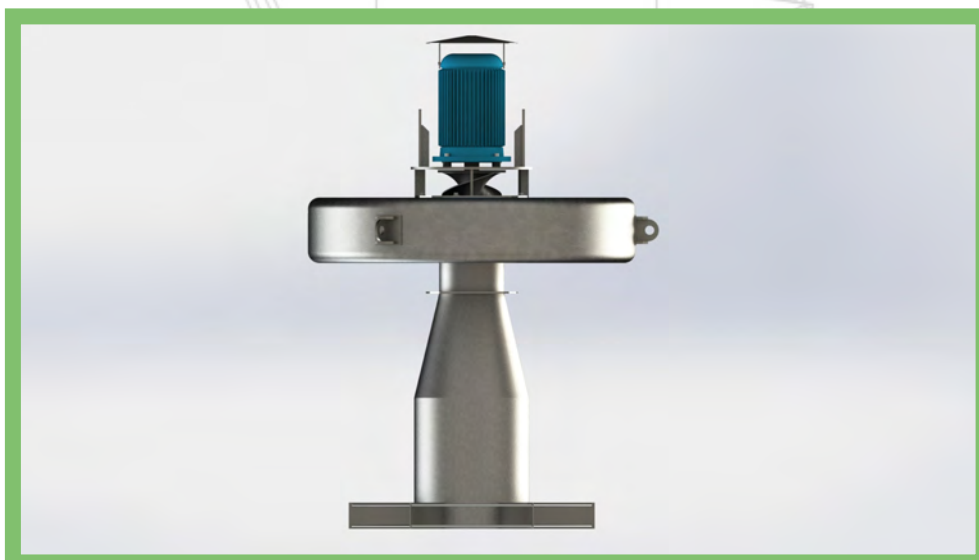
# SCREW TYPE FLOATING SURFACE AERATORS

## General Description and Intended Use

Screw type floating surface aerators are generally used to make mixtures in domestic or industrial wastewater in balancing pools located in the wastewater treatment plants. It is used to provide essential oxygen for the microorganisms in aeration pools located in biological wastewater treatment plants to maintain vital activities. Screw type floating surface aerators consist of drive group, barge, shaft, rope and screw vanes.

## Working Principle Of Equipment

Screw type floating surface aerators float in the wastewater with the help of float. Floating aerator that floats in the wastewater can be fixated in position by connecting rope connector ring bolts. Shaft and screw vanes coupled on shaft that placed perpendicularly onto wastewater surface connected to drive group lift up the wastewater in the pool by spinning at great speed. Wastewater is carried up with screw vanes and crashes into the grip flapper and scatters around. Wastewater contacts with oxygen in the air and aerated with the help of scattering.



# ADVANTAGES

- High Performance Aeration,
- Easy Transportation and Mounting,
- Possibility to Tracking and Check the System Operation over SCADA,
- Start-Stop Operation in Oxygenation Control,
- Easy Maintenance and Low Maintenance Costs,
- Suitable for Outdoor Operation,
- Long Operation Life,
- Economical and Resistant Design,
- Design Suitable for Capacity According to Pool Volume and Oxygen Requirement.

## ACCESSORIES

- Rope Fixing Float\*
- Oxygen Meter\*
- Frequency Inverter\*
- Emergency Button\*
- Local Power and Control Panel\*

\* Optional accessories are defined.

# Material Details

- Floats: They can be manufactured as DIN 1.4301 (AISI 304) or DIN 1.4401 (AISI 316).
- Screws: They can be manufactured as DIN 1.4301 (AISI 304) or DIN 1.4401 (AISI 316).
- Flappers: They can be manufactured as DIN 1.4301 (AISI 304) or DIN 1.4401 (AISI 316).

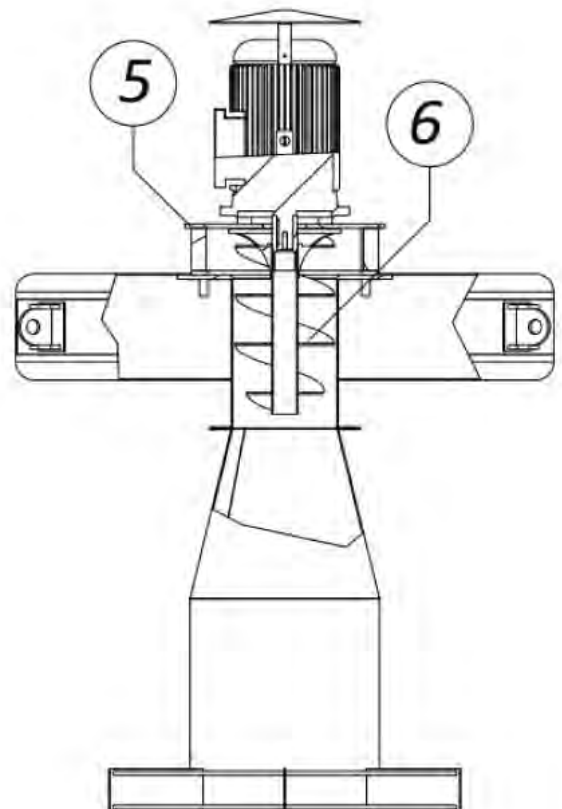
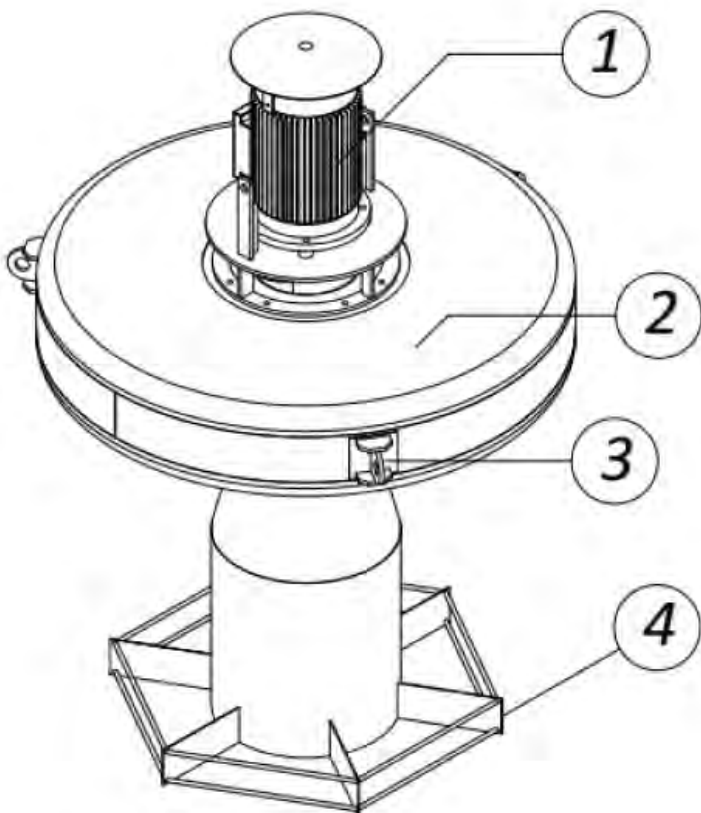
"Different materials can be preferred in accordance with the request of the customer."

## TECHNICAL SPECIFICATIONS

- Water scatters thanks to grip flapper under the motor and screw vanes. This structure enables water to be aerated with high efficiency.
- It operates half sunken at vertical angle.
- It enables operations to be conducted according to the variable water level in the pool.
- Aerator does not tip over when the pool is discharged thanks to hexagonal structure at the bottom. It descends on the ground.



| No | Part Name                   |
|----|-----------------------------|
| 1  | Motor                       |
| 2  | Aerator Float               |
| 3  | Rope Connector<br>Ringbolts |
| 4  | Hexagonal Base              |
| 5  | Flapper                     |
| 6  | Screw                       |







Marmaracık Mah. 1982. Sok. No: 13/1  
Ergene / Tekirdağ / TÜRKİYE  
+90 0282 686 63 33 pbx +90 0282 686 63 34

[www.baharmuhendislik.com](http://www.baharmuhendislik.com)