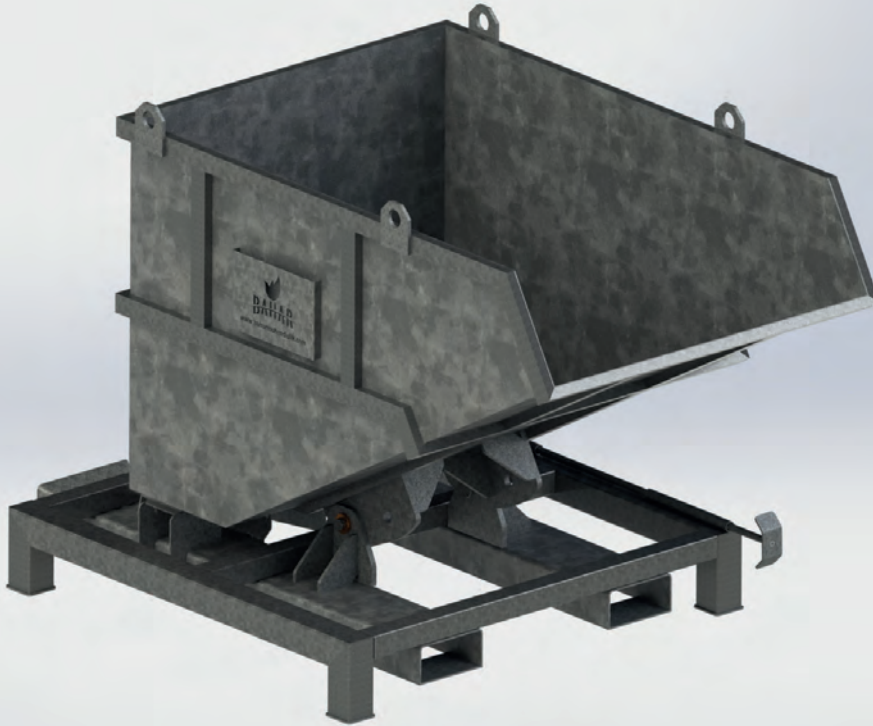




SOLID WASTE CONTAINERS



www.baharmuhendislik.com



SOLID WASTE CONTAINERS

General Description and Intended Use

It is generally used in treatment plants, physical, chemical, biological treatment and sludge dewatering units. Solid / liquid wastes in these units are temporarily stored in solid waste containers. Solid waste containers are manufactured as two types as fixed type and automatic dumping type upon request.

Fixed type containers are designed in compliance with the structure to be lifted by dumping and cleaning vehicles of municipalities. Therefore, containers are easily dumped and cleaned.

Automatic dumping type containers are designed to be lift with heavy equipments such as forklift etc. So that, containers are transferred to the intended area after they get full, and are dumped and cleaned with automatic dumping.

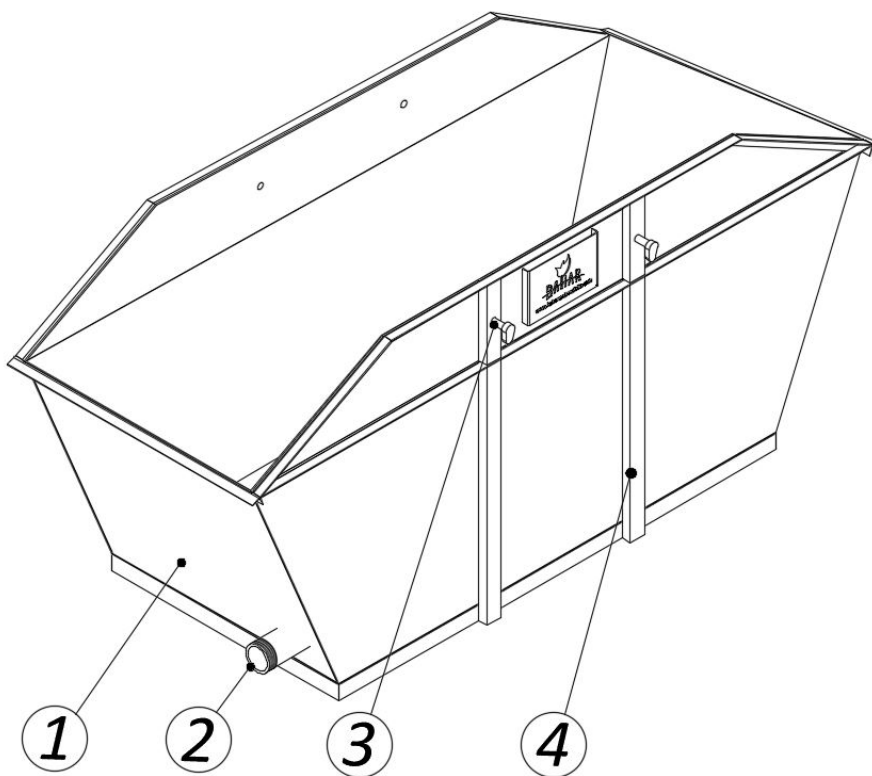
Containers are manufactured as reinforced and lightweight thanks to new special design frame structure.

Working Principle Of Equipment

Solid waste containers are easily assembled to the area to be used. Accumulated wastes in the containers are temporarily stored here. The water discharged from the wastes stored in the containers are removed from the area thanks to bottom discharge connection. So that, the wastes stored in the containers are much more dewatered.

Technical Specifications

- They are designed in special dimensions in accordance with dumping area and waste storage capacity.
- Designs have storage volume between 500 lt - 5.000 lt as a standard. Special containers with larger volumes can be designed in case it is necessary.
- It is used for temporary storage of solid wastes consisting of equipments such as linear, mechanical screens, rotary disc screens, drum screen, screen press, grit classifier, decanter, filter press, belt press, screw press etc.).
- It is used for temporary storage of liquid wastes consisting of units such as grit and oil retainer ponds, DAF tank, surface scrapers etc.
- It is designed suitable to container dumping vehicles of municipalities.
- It provides additional dewatering for solid wastes.
- It is manufactured as covered to minimize odor problem.



Standart Type

No	Part Name
1	Main Body
2	Container Bottom Discharge Outlet
3	Carriage and Discharge Lugs
4	Side Supports

Advantages

- Compact Design,
- Easy Transportation and Mounting / Demounting,
- Long Operation Life,
- Large Volume and Storage Opportunity,
- Easy to Clean and Dump,
- Design in Any Size,
- Economical and Resistant Design.

Accessories

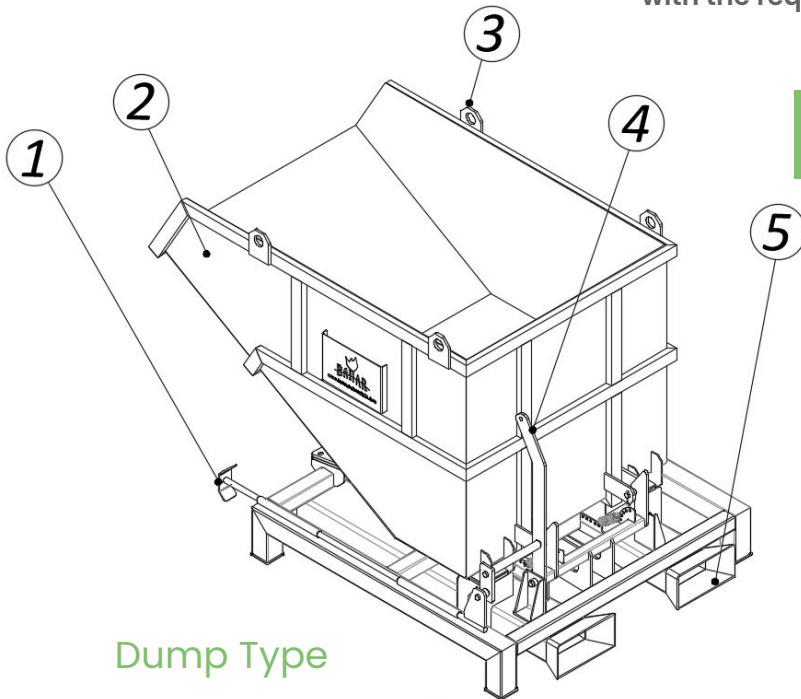
- Drip Water Bottom Outlet Connection
- Upper Cover of the Container*
- Rail System*

* Optional accessories are defined.

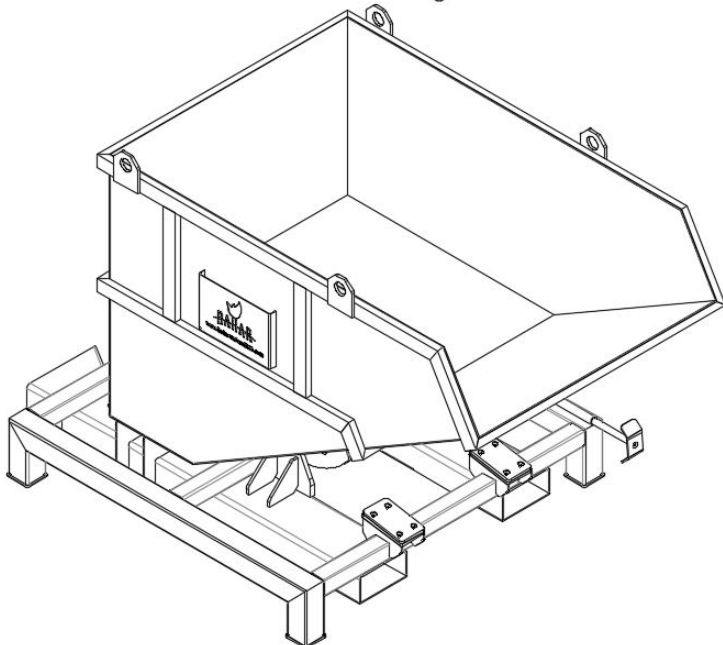
Material Details

- Frame: It is manufactured as S235JR + Hot Dipping Galvanized Coating or S235R JR+ Epoxy Paint.

"Different materials can be preferred in accordance with the request of the customer."



Dump Type



No	Part Name
1	Automatic Dumping Pin
2	Main Body
3	Lifting Lugs
4	Manual Dump Arm
5	Forklift Connection Tool



Marmaracık Mah. 1982. Sok. No: 13/1
Ergene / Tekirdağ / TÜRKİYE
+90 0282 686 63 33 pbx +90 0282 686 63 34

www.baharmuhendislik.com